

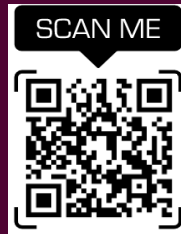


Karolinska
Institutet

The Nordic Zebrafish Network

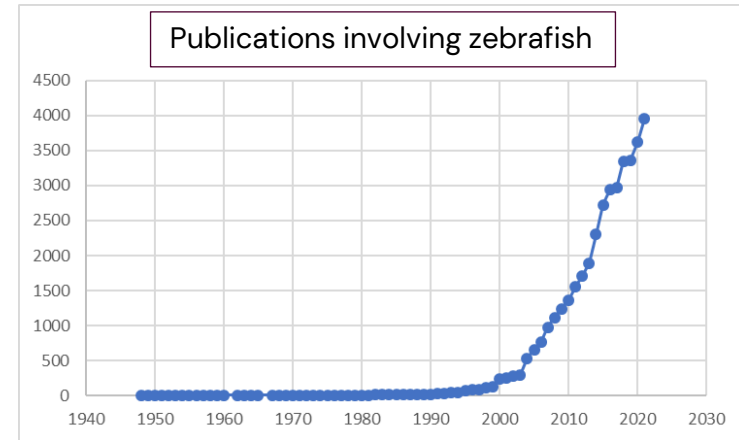
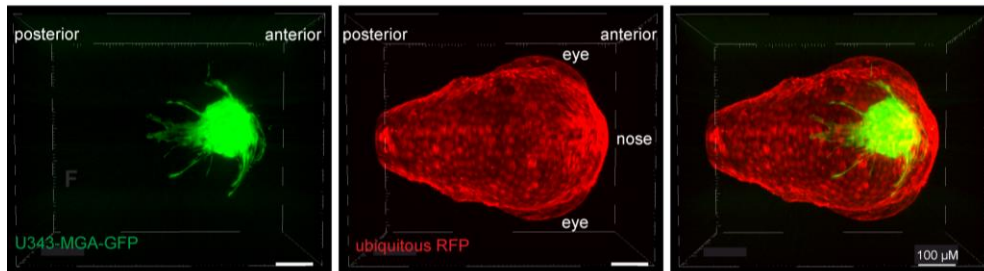
An update.

Lars Bräutigam, PhD
Head zebrafish core facility
lars.braeutigam@ki.se



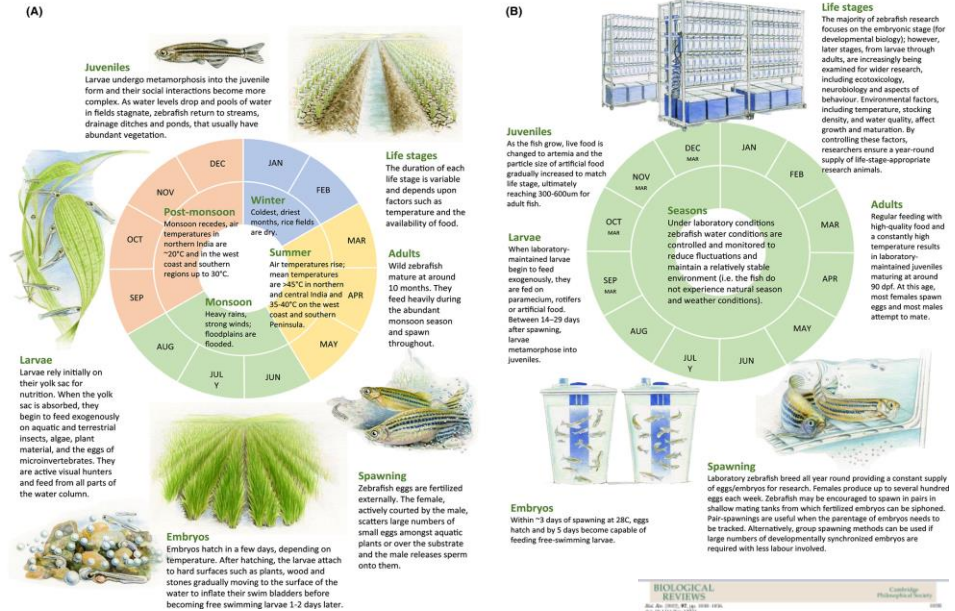
The zebrafish animal model

- Widely used in research since ca 1990
- 2nd most used animal model in the EU
- Used in basic research, translational research and pre-clinical research
- Important part of a 3R strategy



Husbandry and science – far from being standardized

- The husbandry of zebrafish is easy – but very hard to standardize
- No education on zebrafish for animal caretakers available
- Many fish facilities are run by researchers and are not professional animal facilities

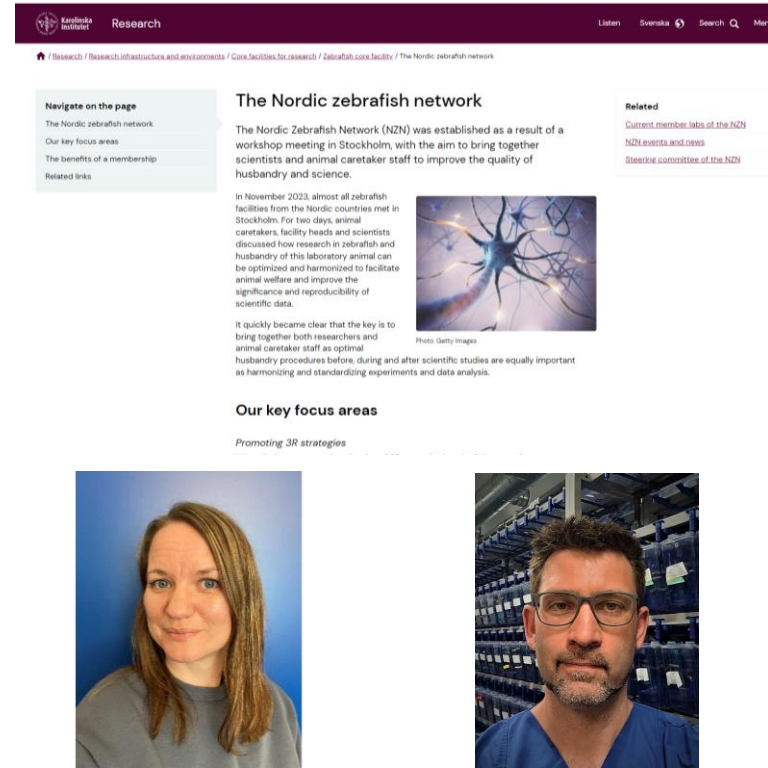


We needed to do something about it

- We were leading a new working group and established a zebrafish specific and harmonized LAS-A course. Since 2023, this course is available to the NCLASET consortium in Sweden.
- Together with the NordUniversity Bodø, we jointly organized the first zebrafish husbandry course in November 2023 at Karolinska Institutet
- Together with the NordUniversity Bodø, we jointly organized the Nordic Zebrafish meeting 2023

The Nordic Zebrafish Network was founded in 2023

- A network for all that work with zebrafish in the Nordic countries
- Bringing together husbandry staff, facility heads, vets and scientists
- Annual course in advanced zebrafish husbandry and procedures
- Annual Nordic Zebrafish meeting



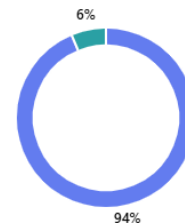
Where are we today?

- Survey amongst the zebrafish community 2025
- Ambition vs. possibilities and time
- Practical problems – hosting of webpage, invoicing member fees etc

1. Do you think there is a need for a Nordic Zebrafish network and that you could profit from it?

[Weiter](#)

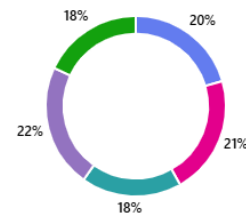
• Yes	30
• No	0
• Maybe	2



2. Which activities provided by Nordic Zebrafish Network would you profit from and like to attend:

[Weiter](#)

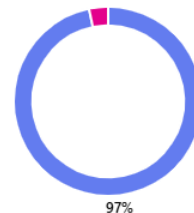
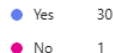
• Annual meetings and conferences	25
• Training courses and workshops	26
• Regular updates on regulatory (legislative) matters	22
• A platform to share protocols and expertise	27
• A platform to find peers that can give you input in your questions and problems	22



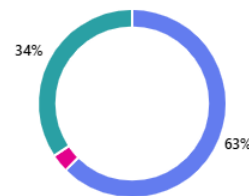
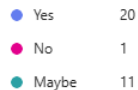
Where are we today?

- Survey amongst the zebrafish community 2025
- Ambition vs. possibilities and time
- Practical problems – hosting of webpage, invoicing member fees etc

Do you think you would profit from a dedicated webpage of the Nordic Zebrafish network?



Would you pay a small yearly fee (ca 20 €) to be member of a Nordic Zebrafish network?



The journey continues...

- Annual course in advanced zebrafish husbandry and procedures in week 46
- Nordic Zebrafish meeting in week 46 at Karolinska Institutet in Stockholm





**Karolinska
Institutet**